

# Biotage® SNAP Ultra

## Spherical silica flash chromatography cartridges



Biotage **SNAP Ultra** flash chromatography cartridges deliver the highest purification performance available industry leading peak resolution, universal plug and play compatibility, and low back pressures all from the company that defined modern flash chromatography.

### The highest performance available

Precision engineered Biotage SNAP Ultra cartridges deliver double the purification capacity utilizing small particle spherical silica with an 40% increase in surface area. This proprietary silica reduces peak width and provides higher concentration fractions with less fraction volume.

### Designed for the Biotage Isolera™

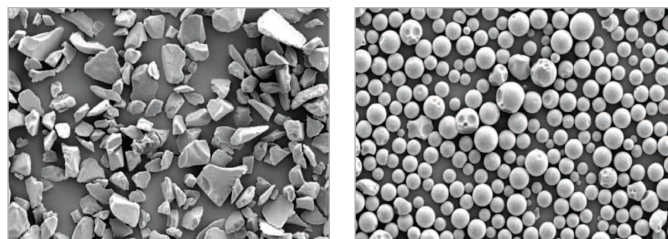
Biotage Isolera software and Biotage SNAP Ultra cartridges work together as a system to produce pure compounds the first time. Luer lock inlet and outlet ports ensure robust connection to the Isolera or any other flash chromatography system.

### Wide range of sizes for scalability

Biotage SNAP Ultra cartridges are available in sizes from 10g–340g providing a scale-up path from milligram loads to multi-gram loads without gradient modification.

### Features










- Biotage HP-Sphere™ spherical silica with 40% more surface area delivers the highest sample loading available to reduce purification costs
- Spherical 25 µm particles deliver the best peak resolution and highest concentration fractions reducing solvent evaporation time
- Removable cap provides internal sample loading, both liquid and dry to improve purification performance
- Samplet® cartridge compatibility to pre-concentrate and eliminate solvent dissolution
- Fast flow rates in all types of viscous solvents with spherical media
- Medical-grade polypropylene reduces leachables that can contaminate purified compounds
- Individually lot numbered for traceability
- Designed to be the perfect complement to Biotage Isolera flash chromatography systems
- Universal fit onto all flash systems with Luer inlet and outlet connections



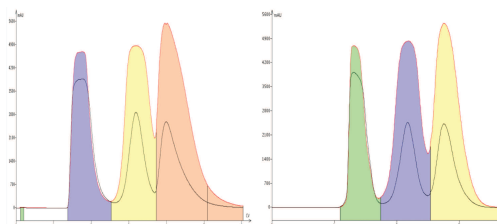
Standard flash cartridges use basic performance, irregular silica resulting in higher back pressure due to fines (left). Biotage SNAP Ultra cartridges utilize spherical Biotage HP-Sphere™ silica delivering 40% more surface area and low back pressure.

Performance like this means that cartridges can be loaded with twice the amount of sample to be purified. Use a cartridge that is half the size that you would normally use. A smaller, high surface area cartridge takes less time and less solvent to do the job of a cartridge twice the size.

- Higher loading per gram of silica means smaller cartridges can be used to perform any separation
- Smaller cartridges use less solvent and require less time
- Chemists produce more compounds in less time
- Less solvent use also means less generated waste—a major ecological improvement

	Biotage ZIP™	Biotage SNAP	Biotage SNAP Ultra
Features			
Performance			
Price			

Biotage® Flash Cartridge Comparison



Biotage SNAP Ultra silica has 40% higher surface area than other spherical flash silica and delivers increased loading capacity. At 4% load (4 grams sample per 100 grams of silica) a 25 g Biotage SNAP Ultra cartridge (left) provides an equivalent separation as a competitive 25 g spherical silica cartridge with a 2% sample load.

## Specifications

<b>Materials</b>	Tubes: inert, medical-grade polypropylene (USP Class VI) Frits: inert polyethylene
<b>Pressure limit</b>	100 psi (7 bar) 340 g max pressure 75 psi (5 bar)
<b>Resolution</b>	Minimum 7000 N/m (plates per meter)
<b>Quantity</b>	20/case; 6/case for 340 g
<b>Compatibility</b>	Universal Luer connections
<b>Sizes</b>	10, 25, 50, 100 and 340 g cartridges

## Ordering Information

Product	Part Number
Biotage SNAP Ultra 10 g, 20/case	FSUL-0442-0010
Biotage SNAP Ultra 25 g, 20/case	FSUL-0442-0025
Biotage SNAP Ultra 50 g, 20/case	FSUL-0442-0050
Biotage SNAP Ultra 100 g, 20/case	FSUL-0442-0100
Biotage SNAP Ultra 340 g, 6/case	FSUL-0442-0340
Biotage SNAP Ultra Samplet® 1 g, 20/case	SAS-0442-0010
Biotage SNAP Ultra Samplet 3 g, 20/case	SAS-0442-0025
Biotage SNAP Ultra Samplet 10 g, 20/case	SAS-0442-0100
Biotage SNAP Ultra Samplet 34 g, 6/case	SAS-0442-0340

© 2012 Biotage. All rights reserved. All brand and product names are trademarks or registered trademarks of their respective companies. The information contained in this document is subject to change without notice.

TN-0032.0112

## Related Products



### Biotage® Isolera™

The Biotage Isolera family of flash purification systems enables chemists to easily achieve better separations. Collect fractions using two wavelengths, adjust the flow rate from 1 to 200 mL/min as needed and use up to four solvents in a single gradient, for maximum purity and yield.

#### NORTH AMERICA

+1 800 446 4752  
+1 704 654 4900 tel  
+1 434 296 8217 fax  
ordermailbox@biotage.com

#### EUROPE

+800 1856 5710  
+46 18 56 57 10 tel  
+46 18 56 57 05 fax  
order@biotage.com

#### JAPAN

+81 3 5627 3123 tel  
+81 3 5627 3121 fax  
jp\_order@biotage.com

#### CHINA

+86 21 2898 6655 tel  
+86 21 2898 6153 fax  
cn\_order@biotage.com

To locate a distributor please visit our web site at [www.biotage.com](http://www.biotage.com).